



BRICK RENAISSANCE FOREWORD

A traditional material crafted from clay and water, brick is enjoying something of a renaissance. Builders and tenants are using brick on both exteriors and interiors for its expressiveness and personality. Architects and planners are using brick to add vibrancy and charm to the look of a building. That's because a brick wall is never just a boring, monochrome surface. The choice of colours, colour variability, subtle nuances and shades is almost limitless. Different joints and bonds can be used to add a further twist. Brick is enduring, soundproof, fireproof, insulating and environmentally friendly. Brickwork is also increasingly taking centre stage as an economical way of meeting enhanced thermal insulation specifications for external walls. Clay bricks are used throughout the world and are a hallmark feature of many historic and award-winning facades. For the 2017 Fritz Höger Prize for Brick Architecture, Initiative Bauen mit Backstein (of which we are a member) is once again on the hunt for architects who are utilising the potential of this traditional material to create timeless contemporary buildings. The prize, first awarded in 2008 and awarded every three years since, has become one of Germany's most important architectural prizes.

We hope you enjoy this second edition of our newsletter!

Dr. Dirk Deppe

Bernd Deppe



A CONCERT HALL FOR THE SYMPHONY ORCHESTRA THE NEW MUSIKFORUM IN BOCHUM

With congregations dwindling, many of our venerable churches end up being deconsecrated and eventually torn down. One church which has been spared this fate is the former St Mary's Catholic church in Bochum. Architects Martin Bez and Thorsten Kock have succeeded in converting this 18th century house of worship into the central section of the new Bochum Musikforum. In the heart of the urban Bermuda3eck district, famed for its nightlife in Bochum and beyond, the Anneliese Brost Musikforum Ruhr features a large concert hall and a multifunction room. It provides a permanent home to both the Bochum Symphony Orchestra and the local academy of music. The new additions to the structure flank the nave of the church, leaving just a narrow choir projecting from the ensemble. The tone of the exterior is set by a pale brick facade. The pale terracotta brick was exclusively developed and manufactured for the Musikforum. The facade consists of whitewashed brickwork. The red waterstruck brick shines through, echoing the material of the historic St Mary's Church and reflecting the colour of its original, red bricks.

Project details

Completion
October 2016
Total construction cost
€38.9 million
Floor area
Gross floor area 7,250 m²
Client
Bochum City Council
Architecture
Bez + Kock Architekten
Material
1693w, waterstruck, bronze, whitewashed
Photographs
Matthias Jäger



BRICK-CLAD CONCERT HOUSE BEZ+KOCK ARCHITEKTEN

The architect responsible for designing the new Anneliese Brost Musikforum Ruhr is Thorsten Kock, co-founder, with Martin Bez, of Stuttgart-based architects and planners Bez + Kock Architekten. The firm, set up in 2000, employs around 35 people and gets most of its work by winning architectural competitions. We spoke to Thorsten Kock about the new Musikforum building.

What was the basic idea behind the design?

The key design idea was to position the building as an elongated structure running along Viktoriastrasse, with a wide area in front and large recessed entrances on both sides of the choir.

What particular challenges did the design pose?

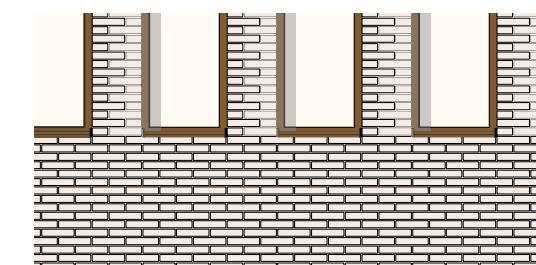
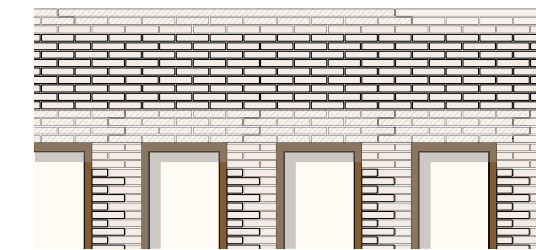
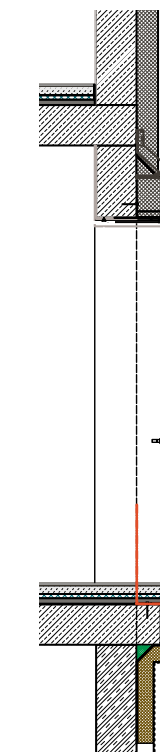
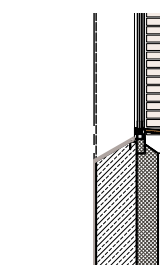
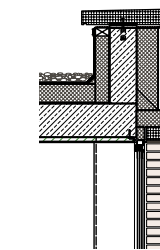
One of the biggest challenges was to integrate the St. Mary's Church building into the ensemble in an appropriately respectful manner. The church has been a gathering place for hundreds of years and we wanted to preserve that aspect and integrate it into the new ensemble as a key part of its identity.

How important is the facade as a design component?

The facade is very important. At first sight, the pale beige bricks appear to offer a colour contrast with the nave of the church. A closer look reveals, however, that the brick echoes the red brick used in constructing the church.

Tell us about your collaboration with Deppe Backstein.

We didn't approach Deppe Backstein with our requirements until the execution phase, so there wasn't much time left for brick development. Deppe's flexibility and individual advice and support helped ensure that we were able to develop the perfect brick within the time available.



Detail of the facade



PERSONALISED FUNDRAISING BRICKS DONATIONS FOR BUILDING PROJECT

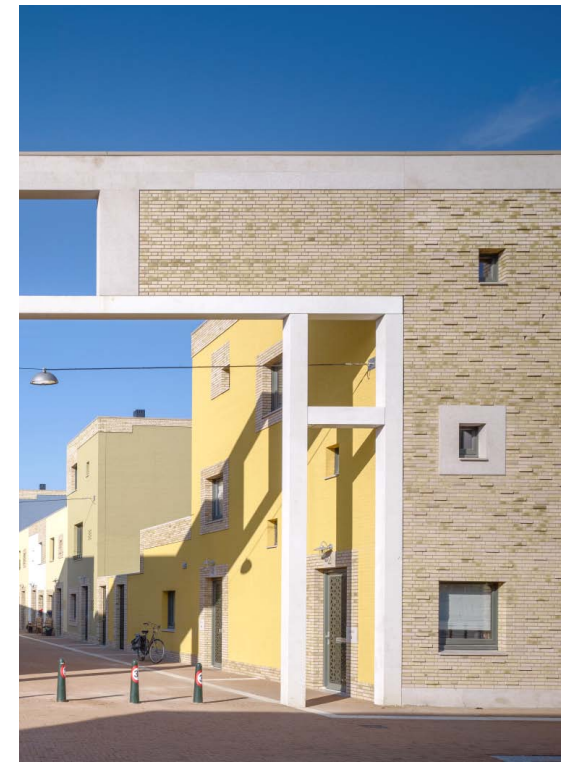
Kolping-Bildungshaus-Salzbergen (KBS) is a busy educational facility and meeting place with around 10,000 overnight stays annually. Due to the limited number of meeting rooms, the centre was not being used to its full potential. As a result, last year the centre decided to construct a new meeting house and extend the existing dining room. Deppe Backstein supported the financing of the project with a fundraising initiative, based on a previous successful fundraiser for the extension to Kloster Frenswegen in Nordhorn.

Deppe manufactured the bricks for the facade of the new meeting house. In return for a donation of at least €250, private individuals, companies and institutions were able to have a personal signature inscribed on a brick. On April 1, 2016, 200 unfired bricks were hand stamped at the Deppe Backstein brickworks. The personalised bricks were built into the new building in clearly visible positions. The 'Bricks for the Future of Kolping-Bildungshaus-Salzbergen' fundraiser raised around €81,800.



PERFORATED FAÇADE ATTRACTS VISITORS A LOOK BACK AT BAU 2017

With a selection of brick innovations, and presentations showcasing a range of finished projects, Deppe Backstein presented itself for the first time at BAU 2017 – the world's leading trade show for architecture, materials and systems – in Munich. The booth, specially developed for the six-day show, was designed to give a very hands-on sense of the traditional craftsmanship involved in brick-making. It was constructed from a rounded perforated brick facade. "We wanted a booth that would convey the natural beauty of brick as a construction material in a limited space, and attract the attention of visitors to the show," explained company director Dr. Dirk Deppe. The team enjoyed many interesting technical discussions on innovative facade solutions for commercial construction and housing projects, and forged new contacts both in Germany and abroad. Visitors to the show were particularly interested in our original coal-fired bricks, with their earthy, vintage character and striking coal-firing marks. Sales specialist Bernd Deppe sums up the company's first appearance at BAU 2017 thus, "Here in Munich, we have successfully demonstrated that Deppe Backstein can develop excellent, future-oriented facade solutions for every imaginable requirement."



DEPPE BACKSTEIN THE BRICKWORKS

We have been developing and manufacturing bricks in a wide variety of formats and designs since 1888. For us, team spirit, responsibility and customer satisfaction are of the highest priority. With our 60-strong team, we support architects, planners and builders at all stages of the building process, from start to finish. What makes us stand out is individual advice, innovative ideas, custom production runs and reliable logistics. With flexibility and exacting quality standards, we help you realise even the most unusual designs. We love a challenge, so contact us today!

Deppe Backstein-Keramik GmbH
Neuenhauser Straße 82 · 49843 Uelsen-Lemke

Tel. +49 (0) 59 42 / 92 10 - 0 · Fax +49 (0) 59 42 / 92 10 - 44
E-Mail info@deppe-backstein.de · www.deppe-backstein.de



FORGOTTEN TEMPLE OF MODERNISM RECREATING VILLA WOLF

On the 100th anniversary of the Bauhaus and the 50th anniversary of the death of architect Mies van der Rohe, Villa Wolf, a pioneering classical modern villa, is to be rebuilt on its original site. The project was initiated as a result of a joint German-Polish initiative organised by Gubin City Council and Verein Architekturpreis Berlin e.V. Around €2 million will be required for planning and construction. The initiators hope to raise this through an international fundraising campaign, with the possibility of some EU funding. Students and lecturers at the University of Applied Sciences Potsdam are now working on reconstructing the original plans, currently in MoMA in New York. Where possible, the aim is for the reconstruction to be carried out using traditional materials and techniques contemporary to the original construction. Deppe Backstein is supporting the reconstruction of the villa.



FRESH FROM OUR KILNS 1693ekged

Darker colourations, ranging from grey-blue and anthracite to blacker tones, are very much in fashion at the moment, and work well in buildings with a more stripped back visual style. This coal-fired brick makes a real impression, thanks to its characteristic play of colours, produced by the reduction-firing process. The brick gets its silvery-grey dyed-through look – with colour nuances ranging from anthracite to olive – from a second firing in a reducing atmosphere in a special kiln. The coal firing and the mixed face configuration generate additional colour compositions, so that these modern, but nonetheless traditional-looking bricks can be used to create an effective architectural backdrop for bold massing and clear forms.

NEW URBANISM VOLTA GALVANI, EINDHOVEN

Colourful gables, a mix of residential and commercial buildings and lots of public spaces – this is the Volta Galvani district. It was planned by Hague-based architects Geurst & Schulze Architekten as part of the restructuring of the Woensel West district in Eindhoven, the Netherlands. The car-free district is entered via a monumental gate, the shape of which is reminiscent of a light bulb. The central Edisonstraat is lined by a roughly equal mix of commercial and residential buildings. When it came to executing the buildings, the architects opted for our 1583 WF waterstruck brick. Parts of the brick facades were painted in luminous colours, giving the district as a whole a vibrant, oriental look, reinforced by the gateway's grid-like facade. The common thread pulling the whole district together is the original, pale beige tone, which helps to bind together all the different facades. Tenants have to apply for the residential units, with preference being given to applicants able to make a lasting contribution to the emerging community in this new residential area.

Project information
Completion
April 2014
Total construction cost
€10.0 million
Floor area
Gross floor area 10,320 m²
Client
DNC Vastgoedontwikkeling, Trudo, Eindhoven
Architecture
Geurst & Schulze Architekten, Den Haag
Material
Waterstruck, 1583, picasso, WF
Photographs
Christian Richters