

VERSATILE AND ADAPTABLE FOR INDIVIDUAL SOLUTIONS

The oldest fired bricks ever found were unearthed at an archaeological dig in Knossos, Crete and have been dated to 4,000 BC. As ancient and global as brick is, it is also highly modern. Sensual and practical, everyday, yet so versatile and adaptable! A very physical, functional material to work with, it is a material with many different sides – and not necessarily just six. Our special shapes prove the point time and time again – recently, for example, on the facade of the new Textile Association building in Münster.

Bricks are our life's work, our passion, our heart and soul. We have been creating and refining bricks, working with our customers to develop individual solutions for visionary projects and, by offering outstanding manufacturing flexibility, creating almost unlimited design possibilities since 1888. On this well-worn path, we aim to continue. We use our initiative, aim to think about your needs before you've even identified them, and work with you to help realise even the most complicated facade details.

It's a goal that can only be achieved with a strong team. Our staff support our customers with genuine expertise, imagination and invention. That's why we're pleased to be welcoming further expertise to our sales team in the shape of Branco Kecur, a sales professional with a strong affinity for art and architecture, who joins us after many years at designer kitchen and bathroom fittings manufacturer Dornbracht. In future, Branco will be advising and supporting you with all aspects of your individual facade design.

We hope you enjoy this third edition of our newsletter!

Dr. Dirk Deppe

Bernd Deppe



THE ARCHITECTURE OF PARTING THE NEW ST. GALLEN CREMATORIUM BUILDING

Visitors to a crematorium are often in a highly emotional state. The architecture of these buildings has a difficult task to perform. It needs to convey a sense of security and to help those left behind feel that they are in the best possible hands. In Switzerland, architect Andy Senn has built a new crematorium which meets these requirements perfectly. The crematorium offers a dignified setting for mourners to bid farewell to their loved ones. The building is completely enrobed in brown brick and is almost completely windowless, without giving an undue sense of uniformity. The brickwork uses a characteristic Flemish bond. The mixed face configuration means that the reverse face of the bricks also makes an appearance. In the upper area of the facade, the Flemish bond is replaced by a decorative bond, designed to add additional structure. Areas of perforated brickwork soften the appearance of the facade and bring the necessary tranquillity into some of the interior spaces. With its combination of perforation, ornament and texture, the brick surface as a whole creates a fascinating interplay of light and shadow.

Project information

Completion

October 2016

Total construction cost

10 million Swiss francs, incl. VAT

Floor area

Gross floor area 940 m²

Client

Stiftung Krematorium St. Gallen

Architecture

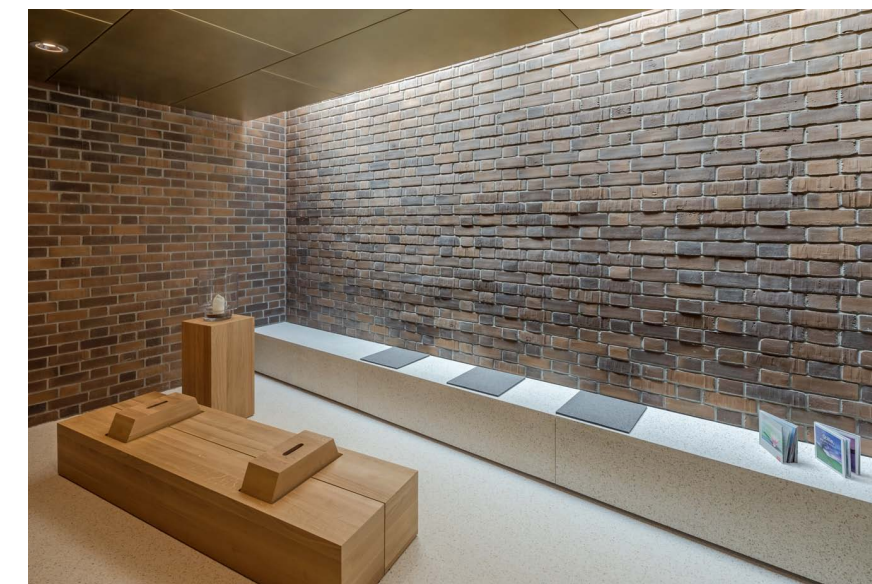
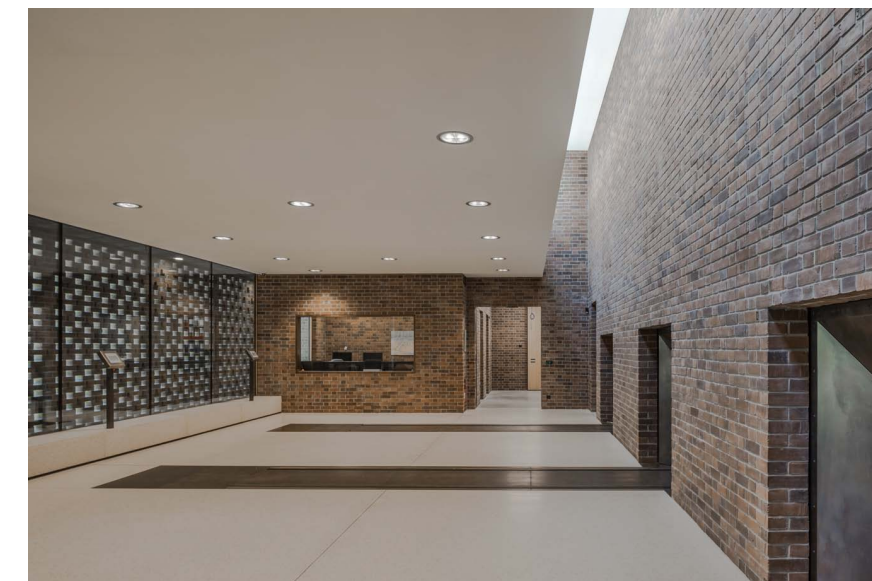
Andy Senn Architekt BS SIA

Material

3540 St. Gallen, waterstruck, chocolate

Photographs

Martin Duckek



COMFORT AND FAMILIARITY ANDY SENN ARCHITEKT BS SIA

Andy Senn, managing director of Swiss architectural firm Andy Senn BS SIA, designed the new crematorium in St. Gallen. As well as various awards, the firm has now won a number of architectural competitions.

What requirements did you have for the design?

Transition and separation are important themes within a crematorium, something that we absolutely wanted the new building to reflect. This is symbolised by the transition between interior and exterior, enclosure and openness, daylight and shadow. These themes are clearly visible from the outside and continue into the various public spaces with their various significations.

How important is the facade as a component of the design?

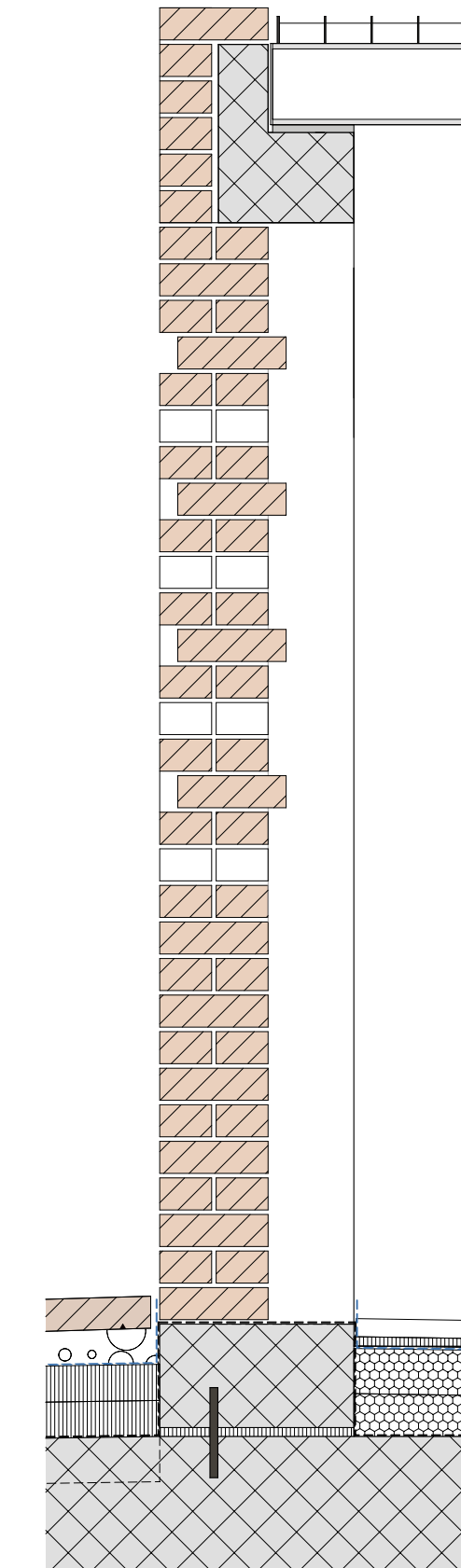
The facade helped us to realise the themes described above. The viewing areas, for example, are completely enclosed, with just a strip of light on the wall from a skylight. The perforated brickwork allows the memorial and service chapels to receive more light and offer vistas. With its glass panels, the entrance area offers an even greater sense of openness and transparency.

Why did you choose brick?

With its earthy colours and the continuity of its detailed jointing, it's a material that has radiated warmth and intimacy throughout time and in every culture.

Why did you choose Deppe Backstein?

Deppe Backstein were the perfect partners for realising the matt surface, the very handsome reverse face and the colour tones we were looking for. The walls were laid in Flemish bond and some areas were executed as a perforated facade, producing a brick surface with interesting interplays of light and shadow.



Detail of the facade



DEPPE BACKSTEIN THE BRICKWORKS

We have been developing and manufacturing bricks in a wide variety of formats and designs since 1888. For us, team spirit, responsibility and customer satisfaction are of the highest priority. With our 60-strong team, we support architects, planners and builders at all stages of the building process, from start to finish. What makes us stand out is individual advice, innovative ideas, custom production runs and reliable logistics. With flexibility and exacting quality standards, we help you realise even the most unusual designs. We love a challenge, so contact us today!

Deppe Backstein-Keramik GmbH
Neuenhauser Straße 82 · 49843 Uelsen-Lemke

Tel. +49 (0) 59 42 / 92 10 - 0 · Fax +49 (0) 59 42 / 92 10 - 44
E-Mail info@deppe-backstein.de · www.deppe-backstein.de

Photo Credits: Kloster Frenswegen: © Franz Frieling · crematorium St. Gallen:
© Martin Duckek · Haus Weyhe: © Stefan Josef Müller · residential complex Oran-
jepanden: © Daria Scagliola & Stijn Brakkee · portraits and stonedetails Deppe:
© André Sobott | Text und Layout: Kuhl|Frenzel GmbH & Co. KG

ADVICE AND SUPPORT COMES AS STANDARD UNSER SERVICE

The most interesting projects come about through dialogue. That's why, as well as building on our wide range of bricks and slips, we are also keen to learn from shared experience.



Management board member Johann Schepers has been providing our customers with support and advice for 33 years and ensures that his expertise as a sales representative is shared with the whole team. For this, we thank him from the bottom of our hearts and wish him all the best for his well-earned retirement. Heiko Hensen, previously out on the road as our sales rep in Northwest Germany,



will take over the areas previously covered by Johann Schepers. He has been actively supporting Johann in the County of Bentheim, Emsland and Osnabrücker Land regions for some years, so is on familiar ground.

E-Mail: h.hensen@deppe-backstein.de
Mobile: +49 (0) 172 3654 113

We are pleased to welcome to our team Branco Kecur, a sales professional who has made a very deliberate decision to dedicate himself to brick. "Brick is honest – you can see what's in it. And it's a material that offers almost unlimited design freedom." He previously worked as Key Account Manager at designer kitchen and bathroom fittings manufacturer Dornbracht.

E-Mail: b.kecur@deppe-backstein.de
Mobile: +49 (0) 173 34108 43

FIRESIDE EVENING FOR ARCHITECTS IN KLOSTER FRENSWEGEN

Is the process of awarding private and public contracts really fair? Are eligibility criteria too strict and are small architectural firms really in with a chance?

These were the questions we explored with our guests as part of our fifth Fireside Evening event on Thursday, November 9, 2017 at Kloster Frenswegen, Nordhorn. Our panelists but also our guests had their say on the subject of 'Competition – a contest of ideas helping to drive innovation? Or a machine for turning creative work into waste paper?' Good food and fine wine by the fireside provided the perfect backdrop for some lively discussion and new perspectives.

Our panellists this year were Dr. Lotte Herwig, a lawyer specialising in public procurement law, Dirk Bonnkirch from competitionline Verlags GmbH, Michael Mackenrodt from architects archiscape, Thorsten Kock from Bez + Kock Architekten, Stuttgart, Swiss architect Andy Senn and Prof. Christoph Mäckler from Mäckler Architekten. The evening was hosted by Michael Schwarz from Profs. Spital-Frenking + Schwarz Architekten.



HEYDAY OF THE BOURGEOISIE HAUS WEYHE

Haus Weyhe is a newly built residential building designed by architects Petra and Paul Kahlfeldt which recalls the heyday of bourgeois society. On the side facing the street, the facade is characterised by a grandiose entrance portico with classical columns, sand-coloured cornices, and pale window architraves. The facade is predominantly constructed from a red extruded brick, a traditional building material which helps give the house a classical feel. The lightly iridescent red tones give the facade a sense of movement, while the light-coloured joints forge a link to the entrance area and windows.

Material 711ws, DF | Architecture Kahlfeldt Architekten |
Photographs Stefan J. Müller



FRESH FROM OUR KILNS 1610ekws DF

The modern colour spectrum of this waterstruck brick ranges from cream to nut-brown, helping to create facades with an extremely natural, harmonious feel. The original coal firing gives rise to discreet burn markings, allowing this brick to stand on its own merits with no artificial engobes. The mixed face configuration permits additional colour compositions. The brand new 1610ekws will be premiered during the restructuring of the village centre around the old Gothic church in Veldhausen. The earth tones of the clay strike a pleasingly harmonious note with the church's centuries-old patinated Bentheim sandstone facade.



MODERN AMSTERDAM ORANJEPANDEN HOUSING COMPLEX

Designed by architects Wessel van Geffen and Quist Wintermans Architecten, the Oranjepanden housing complex is a major residential area in Amsterdam that accommodates a wide variety of residential units for a wide range of different needs and has enabled former tenants to return to their homes following the completion of construction. The construction project in Vrolijkstraat was the last element of the Oosterparkwijk district to be renovated. The project consisted of long streets with rows of five to ten large building complexes. In designing the new buildings, the architects were aiming to create a modern construction which echoes the characteristic Amsterdam architecture of the surrounding buildings. They, therefore, elected to use a red waterstruck brick as the predominant facade material. The vibrancy of the facade acts as a counterweight to the stringency of the modern design. Using special shapes, the decorative band beneath the half-hip roof and brickwork semicircular arches above the porch on the ground floor give the facade a more individual feel and greater vibrancy. The area below the window and porch arches is characterised by alternating headers and stretchers, giving rise to an additional structural element. Glazed bricks decorate parts of the entrance, giving a prestigious feel.



Project information
Completion
September 2014
Client
Ymere Projectontwikkeling, Amsterdam
Architecture
Wessel van Geffen Architecten, Rotterdam
Quist Wintermans Architecten, Rotterdam
Material
Waterstruck, 15500P WF, red
Photographs
Daria Scagliola, Stijn Brakkee