

FOR INTERIORS AND EXTERIORS FOREWORD

Brick is a very versatile material. It can serve as a key design element on elegantly curved exteriors, or equally as a beautiful decorative interior design feature. We've seen our bricks prove their worth for both just recently. Deppe bricks were used for the Deichhäuser buildings in Bremen's Überseestadt district, which feature wave-like walls as a reference to the nearby River Weser. As a specialist brickmaker able to develop the right solution for any brick requirement, earlier this year we also had the pleasure of showcasing our capabilities to an international audience at BAU 2019. The versatility of brick walls as an interior design element was amply demonstrated by our booth. Many thanks to all who visited us!

Even today, brick still gets us fired up. Day in, day out, we strain every sinew to create better bricks. But we don't limit our focus solely to our own area of expertise – we never forget that our work is part of a bigger picture. Our aspiration is and always will be to help create liveable architecture. That's one reason why, for several years now, we have been sponsoring the Conference on Urban Beauty and Liveability. In early May, experts from a range of fields will be coming together at Düsseldorf Rheinterrasse for the tenth time to discuss ways of making cities more liveable.

We hope you enjoy this seventh edition of our newsletter!

Dr. Dirk Deppe

Bernd Deppe



MARITIME MEETS URBAN THE DEICHHÄUSER BUILDINGS IN ÜBERSEESTADT

Überseestadt in Bremen is one of the outstanding dock regeneration projects in Europe. Just two kilometres from the city centre and the cathedral, it has been transformed into a mixed-use commercial, dock, residential, leisure and culture district. One of the highlights architecturally is the Deichhäuser buildings, right by the dockside, which feature elegantly curved brown and blue brick facades, which combine maritime flair and urban sophistication. The Deichhäuser estate was designed by Berlin architects Springer, who took the characteristic architecture of the old Hanseatic city and added a twist of contemporary expressiveness. The exterior of the Deichhäuser buildings draws on both the old warehouses and dock buildings, and on Bremen's early modern brick architectural heritage. The gentle wave-like envelope is a reference to the River Weser, a view of which greets Deichhäuser residents. The dynamic, rhythmic surface of the facade combines expressiveness and restraint, and signposts the area as a vibrant cultural centre, whose maritime location, bars and restaurants, and waterside promenade offer a welcome respite from the stresses of day-to-day life. The coal-fired brick was specially developed and manufactured for the Deichhäuser facades.

Project information

Completion

April 2018

Floor area

Gross floor area 17.150 m²

Client

Justus Grosse

Architecture

Springer Architekten (design)

ArchitekturBüro kauert und könig
(execution planning)

Material

933kws

Photographs

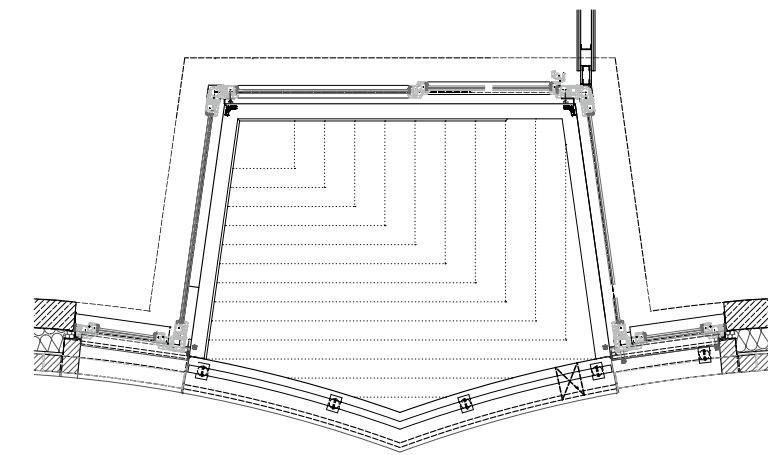
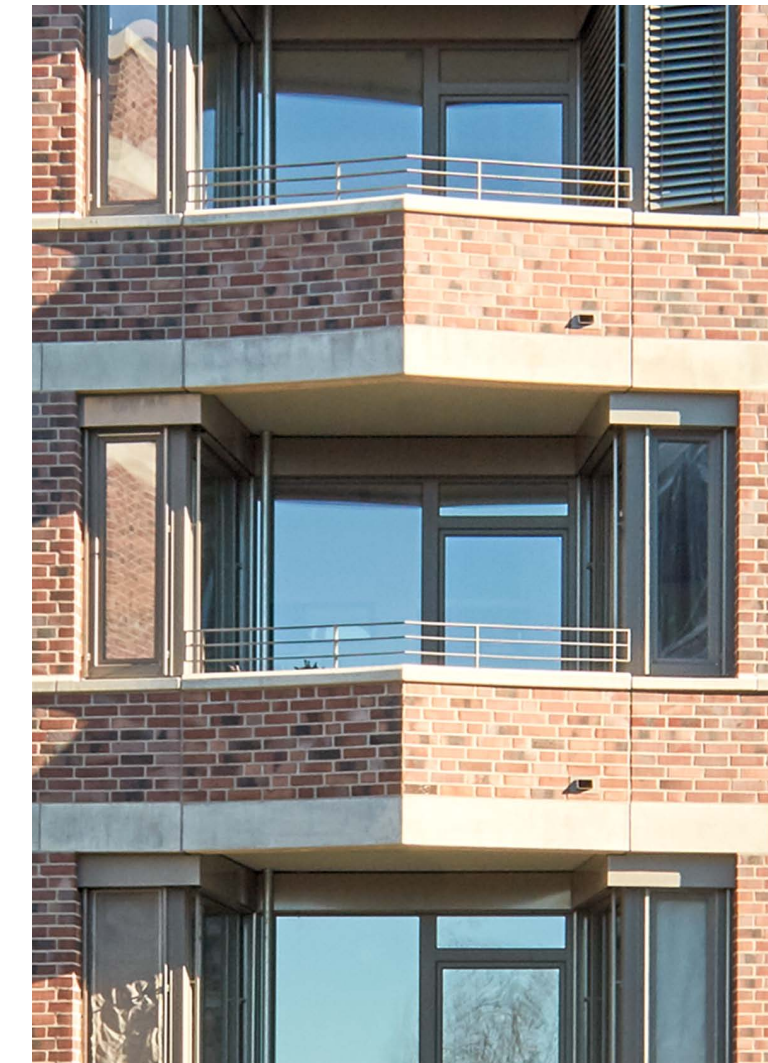
Ulrich Hoppe



PLAYING WITH FORM AND COLOUR 933KWS SONDERBRAND

You won't see the 933kws bricks used on the Deichhäuser facades anywhere else. Every detail of this special firing of the 933kws brick – from shape, to colour, to texture – has been carefully customised to meet the challenges posed by the gently curving facade. It's a classic example of how, working closely with architects and clients, we fire our bricks to meet the precise needs of our customers.

From Überseestadt, it's not far to the wild, capricious sea, reflected in the lively play of colours which animates the Deichhäuser facades. The facade has been laid in a mixed faced configuration, and the effect produced by the lighter and darker tones changes puckishly with the changing light. The bricks owe their somewhat raw look to the fact that we have omitted the engobes normally used to add a smoother sheen to this brick, giving them a brasher, rougher looking final texture. In addition, we have carefully adjusted both the coal content and the proportion of bricks laid to show the reverse face to the client's and architect's specifications. The special firing is responsible not only for the colour of the facade, but also for its unusual shape. The facade's unique, wave-like curves are produced using special shapes manufactured to the architect's precise specifications.



Detail of a balcony with corner window



DEPPE BACKSTEIN DIE ZIEGELMANUFAKTUR

We have been developing and manufacturing bricks in a wide variety of formats and designs since 1888. For us, team spirit, responsibility and customer satisfaction are of the highest priority. With our 60-strong team, we support architects, planners and builders at all stages of the building process, from start to finish. What makes us stand out is individual advice, innovative ideas, custom production runs and reliable logistics. With flexibility and exacting quality standards, we help you realise even the most unusual designs. We love a challenge, so contact us today!

Deppe Backstein-Keramik GmbH
Neuenhauser Straße 82 · 49843 Uelsen-Lemke

Tel. +49 (0) 59 42 / 92 10 - 0 · Fax +49 (0) 59 42 / 92 10 - 44
E-Mail info@deppe-backstein.de · www.deppe-backstein.de

Photo Credits: Bremer Landesbank: © Ulrich Hoppe · Deichhäuser in der Überseestadt: © Ulrich Hoppe, Detailskizze ArchitekturBüro kauert und könig · 10th annual conference: © Detlef Podehl · Mercedes Platz: © Sebastian Fremder · Rückblick auf die Bau 2019: © Oliver Guse · portraits and stonedetails Deppe: © André Sobott | Text und Layout: Kuhl|Frenzel GmbH & Co. KG

A MODERN REINTERPRETATION BDA AWARD IN BREMEN

Every four years, the Association of German Architects presents its awards for outstanding buildings in Bremen and Bremerhaven. Among the winners at the award ceremony in February were two projects using bricks made by Deppe. The new Bremer Landesbank building by London architects Caruso St John picked up another award to add to its growing collection. The expert jury praised the “contemporary reinterpretation of North German brick expressionism”, which, it said, was “equal in stature” to its Domshof neighbours, the Wilhelminian Deutsche Bank building on its right and the Neues Rathaus on its left. They described the building as an “outstanding example of modern design using traditional brickwork”. There was also recognition for An der Gete Primary School, by Bremen-based Haslob Kruse + Partner Architekten BDA, which, the jury noted, welcomes visitors with its “friendly, open appearance”. They cited the warm, red brick facade, the composed, rather than systematic, window layout, the contrasting white window architraves, and the decorative relief produced by having bricks protruding out of the wall. Architects and clients submitted a total of 57 projects for the awards.



10th ANNUAL CONFERENCE URBAN ARCHITECTURE IN FOCUS

The majority of people consider mixed-use districts more liveable, more beautiful and generally superior. Paradoxical as it may sound, however, planning laws no longer permit the creation of new mixed-used districts. This is where the Conference on Urban Beauty and Liveability, which we have sponsored for the last seven years, comes in. The tenth conference is being held on Wednesday, May 8 (starting at 4 pm) and Thursday, May 9 (starting at 9 am). The theme for this year is “Nothing has been finalised! – 10 years, 10 principles of urban architecture.” Düsseldorf Rheinterrasse is this year’s venue, and the event will feature a series of discussions with politicians, prominent figures from the residential property sector and local government, academics, and experts in the fields of architecture and urban planning. The Stadtbaukunst 2019 student sponsorship award will also be presented at the conference. Patron of the event is Markus Lewé, Mayor of Münster and President of the Deutscher Städtetag.

A LOOK BACK AT BAU 2019 REPEAT OFFENDER

With a larger booth and lots of new features, in January Deppe visited BAU 2019 in Munich for its second ever trip to the event. Twice the size, now with a meeting room, and still featuring the unmistakable rounded perforated facade, the Deppe booth enables the team to give trade fair visitors a real hands-on sense of the beauty and versatility of brick. The team showcased a number of architecturally interesting projects involving unusual brick solutions. Deppe even attracted a visit from World-Architects, featuring on their Façade: Land of Unlimited Possibilities guided tour. “Our aim was to showcase brick’s natural beauty as a building material and to inspire our visitors to dream up new ways of using it. That aim has been achieved. We’re now looking forward to building on the contacts we have made, especially international contacts, and turning them into exciting projects,” explains key account manager Bernd Deppe. “It’s too early to give a definitive assessment, but we certainly succeeded in communicating and reinforcing our positioning as an artisan brickmaker brimming with innovative ideas,” muses company director Dr. Dirk Deppe, “And on an international stage to boot!”



FRESH FROM OUR KILNS LESS IS MORE

Less, as we know, is often more. This well-known design adage certainly applies in the case of our brand new, sand grey 1618 brick, with its discreet, natural look. This grey-brown brick looks reduction-fired, but isn’t. This speeds up the production process, and makes it cheaper and more resource-efficient to produce. Instead of giving the bricks a second firing in a reducing atmosphere, they get their natural grey tone from pigments incorporated into the clay. The individual bricks vary in tone from light grey to much darker. The sand grey colour gives the facade a simple, yet elegant, modern look.



A BRICK FOR BERLIN SPECIALLY DEVELOPED FOR MERCEDES PLATZ

There’s a lot going on at Mercedes Platz. The square is bounded on one side by the Mercedes Benz Arena, home to Berlin’s Eisbären ice hockey team. Visitors to various concerts, sporting and entertainment events at the Arena have been flocking to the site behind the East Side Gallery for more than ten years. Since last autumn the hustle and bustle has been extended to the site of the former Ostgüterbahnhof rail freight yard, as the derelict rail sheds and run-down buildings have given way to a new public space featuring fountains, plane trees and four new buildings. Over a period of just two years, builders have created a whole new entertainment district. Bars, restaurants, shops, a cinema, a bowling lounge and the Verti Music Hall – a ‘little sister’ to the Mercedes Benz Arena – are drawing Berliners and tourists to the new square in their thousands. For two of the new building complexes, we developed the 3544kws normal format waterstruck slip. The brick, which ranges in colour from black to brown, is coal fired and laid in a mixed face configuration.

Project information
Completion
October 2018
Total construction cost
€ 200 million
Floor area
Gross floor area 20,500 m²
Client
Anschutz Entertainment Group
Architecture
RTKL Associates, London
(concept/design),
AUKETT + HEESE GmbH, Berlin
(design/execution)
Material
3544kws NF brown-anthraxite
Photographs
Sebastian Fremder