

SHAPING THE URBAN LANDSCAPE FOREWORD

Here at Deppe, we have made it our mission to raise awareness of the built environment, promote sustainable construction and help to create urban districts with high quality design and an excellent quality of life. What that means in practice can be seen in a recent project by Hague-based architects Geurst & Schulze. Kooiplein is a diverse and lively new district in the Dutch city of Leiden. Diverse and lively not just on the outside, but also structurally and in terms of how the people there live. Kooiplein is a model district, a textbook example of successful urban development. And because this is something we care deeply about, we have now become members of the Bundesstiftung Baukultur. We look forward to exciting events and interesting discussions with all those interested in the built environment.

To help shape the urban landscape, you don't just need a lot of bricks, you also need devotion, passion, team spirit, cohesion and a strong family. We would therefore like to take the opportunity to wish our father Wilhelm Deppe, whose name is inextricably linked with the Deppe brickworks, a very happy 80th birthday. After finishing his degree in brick engineering, he took over as head of the brickworks at the tender age of 22. Though now retired, you'll still find him in the production department late into the night making sure everything is running smoothly. We thank him warmly for his eternal support, endurance and drive!

We hope you enjoy this eighth edition of our newsletter!

Dr. Dirk Deppe

Bernd Deppe



UNIFORMITY IN DIVERSITY KOOIPLAIN DISTRICT, LEIDEN

'Kooi' is the Dutch word for cage. That's something that the Kooiplein district in the Dutch city of Leiden definitely isn't, however. On the contrary, Rotterdam-based KCAP, who were responsible for urban planning for the site, and Hague-based architects Geurst & Schulze have succeeded in creating a lively, communicating urban district that brings together residential, work and leisure uses. Six years of planning and construction have given rise to a wide range of accessible apartments, houses, commercial areas and a multi-storey car park. Since its completion, Kooiplein has become the heart of the Leiden-Nord district. A community centre built around a waterside square and a park help to bind the district together, and serve as the main avenues of communication. From the streets Kooiplein has a uniform, yet varied look. The key to this look and the strong sense of cohesion it engenders is the facade material. The brick creates both uniformity and diversity. The facades of the numerous buildings come across as varied, yet coherent. Geurst & Schulze choose to use Waal format bricks in terracotta and Picasso. While the base and windows are framed by terracotta WF 1582 bricks to create interesting highlights, most of the rest of the facade is constructed with WF 1583 Picasso, in a slightly iridescent, yellowish cream colour.

Project information

Completion

December 2018

Client

Heijmans Vastgoed BV

Architecture

Geurst & Schulze architecten,

Den Haag

KCAP architecten,

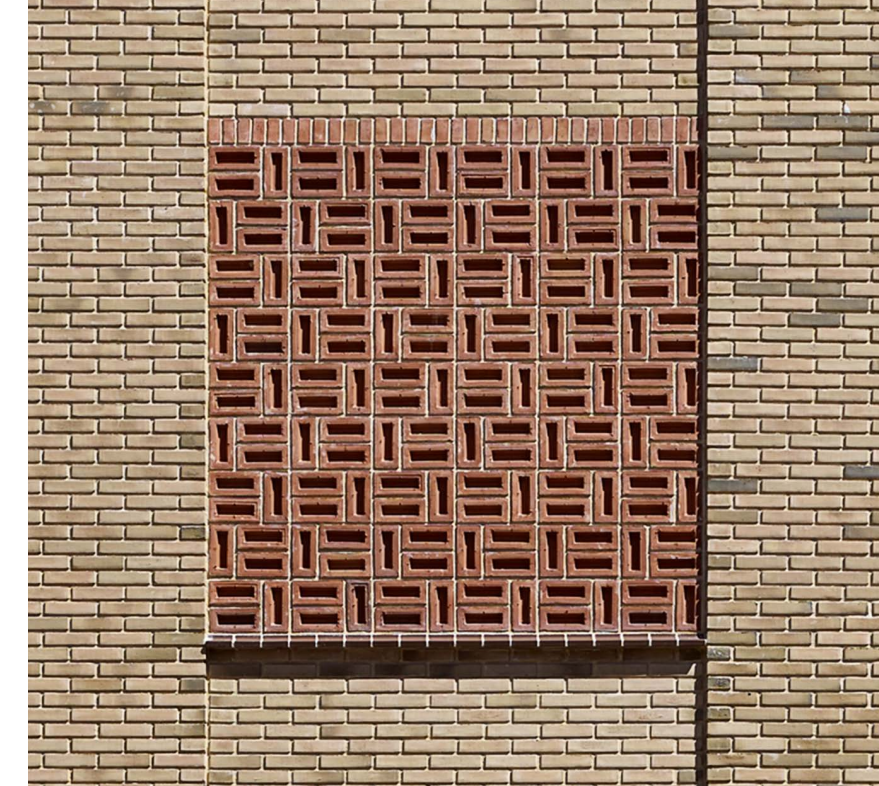
Rotterdam

Material

1582, 1583 WF

Photographs

Stefan Müller



FACADES MIRROR LOCAL LIFE GEURST & SCHULZE ARCHITECTEN, DEN HAAG

Hague-based architects Geurst & Schulze architecten are known for their carefully designed buildings, distinguished by their functionality, sustainability and signature style. For Jeroen Geurst and Rens Schulze, however, this always follows from the use to which the buildings they plan are to be put and the context in which they stand. Beauty, function and construction are always carefully balanced and designed to be mutually reinforcing.

What requirements were there for the design?

The design needed to take account of a number of different factors. In addition to the overarching concept of connecting different parts of the city, the aim was to extend the amount of public space, and to create housing for families, infrastructure and shopping facilities. We have managed to do full justice all of these requirements, creating a district which links together different parts of the city, provides public spaces, and features a good mix of retail and residential space.

How important is the facade as a component of the design?

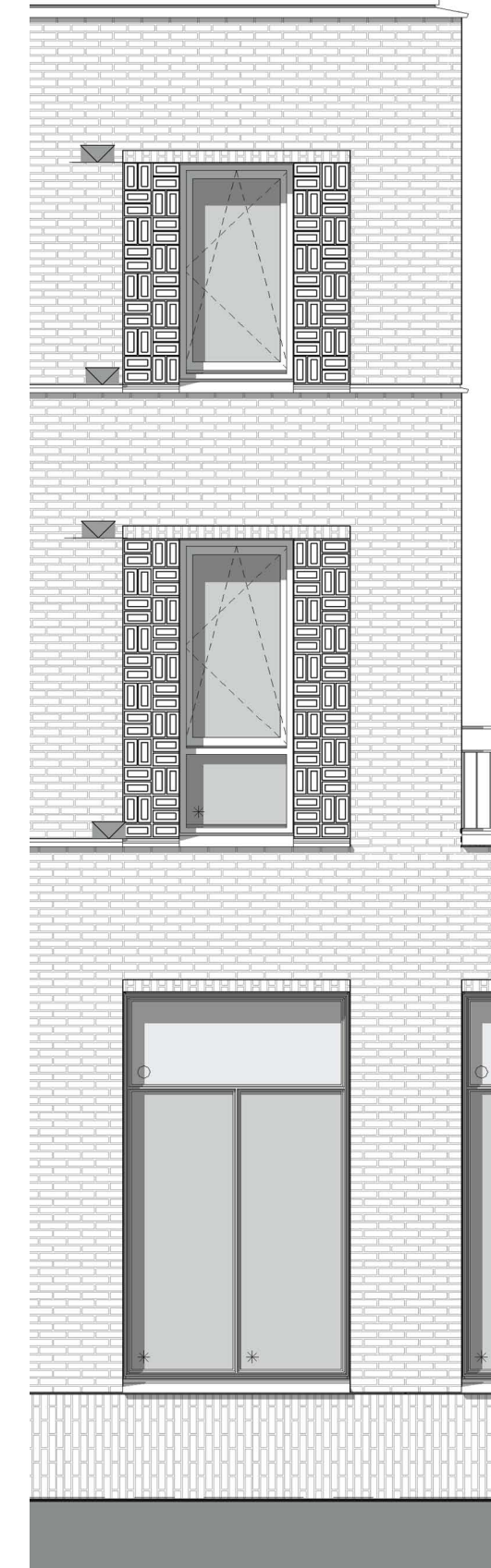
The facades reflect the district's diverse, eclectic 'inner life'. They also ensure that the district feels like an entity in itself – they act as a linking element.

Why was brick your chosen material?

We chose brick because only brick can give a facade such a strong visual quality. Brick also enabled us to link the new district with the surrounding built environment.

Why did you choose Deppe brick?

We wanted to use the facade to make the diversity of the district perceptible from outside. This meant developing and creating different colours and patterns. Deppe Backstein were able to turn our ideas into reality simply and smoothly. And last but not least, because Deppe bricks are available in a very attractive range of colours.



Detail of the facade



COMPLEX BRICKS FOR CURVED STRUCTURES

For centuries arched brick structures were an established technique for spanning large spaces and gaps without supports. High manufacturing costs, however, mean that nowadays this type of structure is no longer used. A research team led by Alexander Pick at the Institute for Constructive Design and Building Construction at TU Darmstadt has now developed a process for low cost production of complex curved brick shells from plane prefabricated units. The bricks used for the research were manufactured at our brickworks. "The project demonstrates that the method we have developed is able to produce a highly efficient supporting structure with a complex curved geometry, large span and small cross-section," explains Alexander Pick.



DEPPE BACKSTEIN DIE ZIEGELMANUFAKTUR

We have been developing and manufacturing bricks in a wide variety of formats and designs since 1888. For us, team spirit, responsibility and customer satisfaction are of the highest priority. With our 60-strong team, we support architects, planners and builders at all stages of the building process, from start to finish. What makes us stand out is individual advice, innovative ideas, custom production runs and reliable logistics. With flexibility and exacting quality standards, we help you realise even the most unusual designs. We love a challenge, so contact us today!

Deppe Backstein-Keramik GmbH
Neuenhauser Straße 82 · 49843 Uelsen-Lemke

Tel. +49 (0) 59 42 / 92 10 - 0 · Fax +49 (0) 59 42 / 92 10 - 44
E-Mail info@deppe-backstein.de · www.deppe-backstein.de



Photo Credits: Bremer Landesbank [Iconic Award] und Rosengart family home, Bremen: © Ulrich Hoppe · complex bricks: © Podehl Fotodesign · Kooiplein district, Leiden: © Stefan Müller, detailed sketches Geurst & Schulze architecten, Den Haag · portraits und stonedetails Deppe: © André Sobott · Text und Layout: Kuhl|Frenzel GmbH & Co. KG

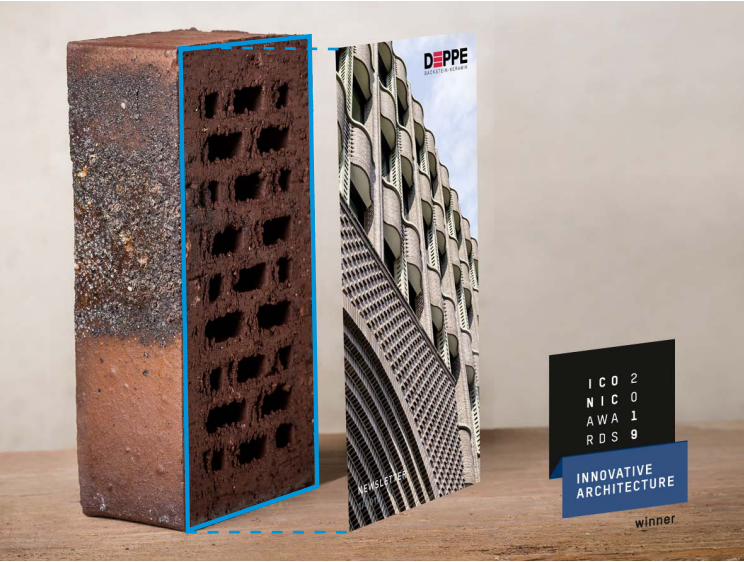
AWARDS ICONIC AWARD 2019

Osnabrück design agency Kuhl|Frenzel has won the German Design Council's Iconic Award for the design of our print newsletter. The newsletter won in the Communication/B2B Communication category "as a sustainable medium of communication." The Iconic Awards 2019: Innovative Architecture were initiated and organised by the German Design Council. They are the first international architecture and design awards to focus on the interplay between architecture and communication. The newsletter's stand out feature is the strong but subtle focus on our product – brick. When folded, the newsletter is the same width and height as a normal format brick (11.5 x 24 cm). The basic design element is a rectangular unit, which defines the line height and distance between columns.



CORPORATE NEWS NEW AUTHORISED SIGNATORIES

It's not just architects, planners and clients who have lots of decisions to make before a construction project comes into being. Day by day, we too have plenty of things to mull over before coming to a considered decision. Most of these decisions are made together as a team. Occasionally, however, decisions have to be made independently. Consequently, in addition to our managing director, Dr. Dirk Deppe, from this year Bernd Deppe, sales manager Jörg Lange (left in the photo) and executive assistant Benjamin Koops (right) have also been appointed as authorised signatories, with authority to sign documents on behalf of the company.



FRESH FROM OUR KILNS 1615hg, 1615w

Not all beiges are created equal. Our beige-grey limewashed 1615hg and beige-grey-white limewashed 1615w bricks are proof of the fine colour nuances that can be achieved with Deppe bricks. They are beige-coloured variants of a highly textured waterstruck brick with a neutral body. While the 1615hg comes with a greyish limewash and makes a fairly restrained contribution to the overall look of the facade, the whiter limewash on the 1615w can be used to add radiance to any facade.

ARCHITECTURALLY STRIKING BRICK ROSENGART FAMILY HOME, BREMEN

This family home in Bremen oozes regionalism, tradition and modernity. Integrated into what was originally a post-war settlement of gablefront houses, the newcomer has been designed to fit with the existing scheme. The traditional brick architecture, typical of the region, is a key form-giving element, and also helps define the building's identity. While the materials used – waterstruck bricks, clay roof tiles, zinc cladding, exposed prefabricated concrete elements and varnished wooden windows – give rise to a muted colour scheme, the mix of horizontal and vertical facade openings produces a great deal of visual interest. This is complemented by a mix of recessed windows and windows flush to the facade, as well as various different brick lintel shapes and designs. The use of a stretcher bond in the main body of the brickwork and the flush pointing with a shell-based lime mortar reinforces the building's rectangular character. Up close, the mixed face configuration gives rise to a fascinating play of colours and textures, inviting you to come closer, feel the brickwork and experience the individuality of the bricks hands-on. To harmonise with the exterior, the terrace has also been constructed using the waterstruck 1670ws.

Project information
Completion
December 2017
Floor area
Gross floor area 250 m²
Client
Nicola und Stephan Rosengart
Architecture
Architektengruppe
Rosengart + Partner BDA,
Stephan Rosengart
Material
Waterstruck 1670ws
Photographs
Ulrich Hoppe